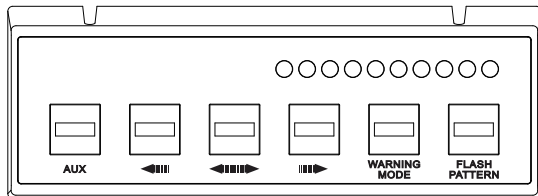


Multi-purpose 6-switches Control Panel

Wiring

RED	to +VDC	
BLACK	to -GND	
WHITE	to LED Indicator Signal (Traffic Arrow or Lightbar)	
GREEN	AUX (Output signal for optional relay)	[ON/OFF Switch]
ORANGE	Left Arrow	[ON/OFF Switch]
BLUE	Right Arrow	[ON/OFF Switch]
BROWN	Warning Mode	[ON/OFF Switch]
YELLOW	Flash Pattern	[Momentary Switch]



Switch Specification

Input Voltage: 10~30 VDC

Input Current: 0.2A / port
1.0A / 6 port

Output Voltage: 10~24 VDC

Output Current: 0.2A x 1 port (AUX) ;
0.01A x 5 ports

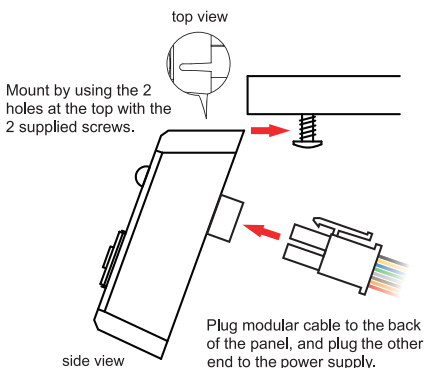
Fuse Rating: 2A

Recommended Relay Specification (User-supplied)

Input Voltage: 10~24 VDC

Input Current: < 200mA

Screw Mount Installation



NOTE: Connect only the RED and BLACK wires to the power supply wiring harness.

Console Mount Installation

