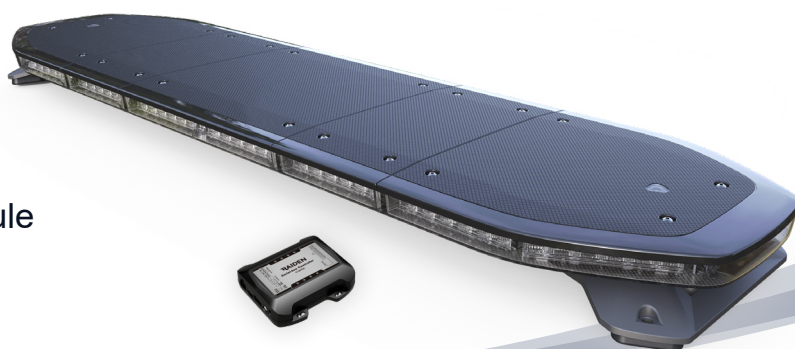


RAIDEN



ULTRA LOW PROFILE LIGHTBAR w/ Programmable Serial bus Control Module



FEATURES

- **Fully-Programmable:** All function wires and individual lighthouse actions may be customised and re-programmed to user's preference.
- **Ultra Low Profile:** With only 4cm (1.69") in height, the Raiden™ lightbar is among the thinnest premium lightbars in the market.
- **Wiring at Ease:** Plug-n-play Serial bus Control Module that converges all wires for a easier installation and simpler wiring.
- **Ambient Light Sensor:** Built-in sensor that detects ambient light and automatically activate or deactivate the Low-Power operation.
- **Single, Dual:** Choice of any colour combination.
- **Powerful Optics:** 360 degree seamless output that meet and exceed ECE R65 Class 2 and SAE standard.
- **Coloured Top:** Choice of any coloured top cover to show your designation.
- **Quality and Durability:** Highest tier premium bar that is built to last and protect your road safety.
- **Multi-Voltage:** Input 12-24VDC with EMC Compliance.
- **Easy maintenance:** Simple removal of top cover for re-configuration or replacement of lighthoods.

SPECIFICATIONS

Compliance: SAE J845 Class 1, SAE J595 Class 1; CA Title 13; ECE R65 II (TA2/TB2/TR2)¹; ECE R10; CISPR25;
NOTE: actual approvals may vary; based on actual lightbar configuration.

Operating Voltage: 12-24VDC

Cable & Wire Gauge: Single Loom Cable, 300 cm (9.8 Feet)

42" (1066 mm) ~ 66" (1675 mm)

Power Cable - 2 wires @ 12AWG
Comm. Cable - 2 wires @24AWG

72" (1825 mm)

Power Cable - 2 wires @ 10AWG
Comm. Cable - 2 wires @24AWG

Serial bus Control Module: 30 cm (11.8 Inch) x 2 Harness

6-PIN Harness (PWR/LB Comm.) | 18-PIN Harness (Input/Output)

2 x PWR wire @22AWG | 16 x Function Input wire @24AWG
2 x Comm. wire @24AWG | 2 x Function Output wire @24AWG

No. of LEDs: Single Colour Lighthouse - 6LED per Lighthouse
Dual Colour Lighthouse - 12LED per Lighthouse

COLOR OPTIONS

LED Colour: Amber, Blue, Green, Red, White (Single or Dual)

Lens Colour: Clear

Top Cover Colour: Amber, Black, Blue, Clear, Red

CURRENT & POWER RATING

CURRENT	@12.8VDC		@25.6VDC	
	Max. Current (A)	Avg. Current (A)	Max. Current (A)	Avg. Current (A)
Single/Dual Colour Lighthouse	0.86 / each	0.43 / each	0.43 / each	0.14 / each
Serial-bus Controller	0.14	0.1	0.1	0.1

CURRENT	@12.8VDC		@25.6VDC	
	Max. Power(W)	Avg. Power (W)	Max. Power(W)	Avg. Power (W)
Single/Dual Colour Lighthouse	11.01 / each	5.5 / each	11.01 / each	3.58 / each
Serial-bus Controller	1.79	1.28	2.56	2.56

SUGGESTED FUSE RATING

FUSE RATING	@12.8VDC	@25.6VDC
Single/Dual Colour Lighthouse	+1.16A / each	+0.58A / each
Serial-bus Controller	+0.19A / each	+0.14A / each

NOTE: Please calculate the total fuse rating needed base on your lightbar configuration.

FLASH PATTERN (Setting via a PC only)

FLASH PATTERN CHART			
1	Double	[2Hz]	19 Triple-Triple Mid
2	Single	[2Hz]	20 Quint-Triple
3	Triple	[2Hz]	21 7-1 Flash
4	Quad	[2Hz]	22 Quad-Single
5	Single	[SAE]	23 Quint-Quint
6	Double	[SAE]	24 ICAO Flash
7	Triple	[SAE]	25 Random
8	Quad	[SAE]	26 Steady Max
9	Quint		27 Steady 100%
10	Mega		28 Steady 75%
11	Giga		29 Steady 50%
12	Ultra	[SAE]	30 Steady 25%
13	Single-Quad		31 Steady 5%
14	Single H/L		32 Steady 1%
15	Single-Triple-Quint		33 Brake (Aux.)-SAE/ECE
16	Single-Single		34 Tail (Aux.) - SAE/ECE
17	Double Double		35 Turn (Aux.) - SAE/ECE
18	Triple-Triple Fast		66 Reverse (Aux.) - SAE/ECE

BAR PATTERN (Setting via a PC only)

CLASSIC BAR PATTERN					
1	Left-Right Single-Single	11	Left-Right Swing I	21	In-Out Quad-Quad
2	Left-Right Double-Double	12	Left-Right Triple-Blast	22	In-Out Quad-Single
3	Left-Right Double-Single	13	Left-Right Swing II	23	In-Out Single H/L II
4	Left-Right Triple-Triple	14	Left-Right Swing III	24	In-Out Double Double II
5	Left-Right Triple-Single	15	Left-Right Triple H/L	25	In-Out Double-Blast
6	Left-Right Quad-Quad	16	In-Out Single-Single	26	In-Out Swing I
7	Left-Right Quad-Single	17	In-Out Double-Double	27	In-Out Triple-Blast
8	Left-Right Single H/L II	18	In-Out Double-Single	28	In-Out Swing II
9	Left-Right Double-Double II	19	In-Out Triple-Triple	29	In-Out Swing III
10	Left-Right Double-Blast	20	In-Out Triple-Single	30	In-Out Triple H/L

TRAFFIC ARROW PATTERN (Setting via a PC only)

TP#	TRAFFIC ARROW PATTERN
1	Sweep Single
2	Sweep Double
3	Sweep Triple
4	Sweep Single End-Double
5	Solid
6	Solid End-Double
7	Solid Chaser
8	Solid Fade
9	Blink Double
10	Blink Triple
11	Blink Solid

PULSING BAR PATTERN							
1	All Pulsing	9	Clockwise Pulsing Chaser	17	Clockwise Pulsing Comet	25	Split Pulsing Comet
2	All Pulsing Fast	10	Anti-Clockwise Pulsing Chaser	18	Anti-Clockwise Pulsing Comet	26	Split Pulsing Comet Fast
3	Left-Right Pulsing	11	Clockwise Pulsing Chaser Fast	19	Clockwise Pulsing Comet Fast	27	In-Out Pulsing Scan Wig-Wag
4	Left-Right Pulsing Fast	12	Anti-Clockwise Pulsing Chaser Fast	20	Anti-Clockwise Pulsing Comet Fast	28	In-Out Pulsing Scan Wig-Wag Fast
5	All Pulsing Tremor	13	Clockwise Pulsing Scan	21	Split Pulsing Chaser	29	Left-Right Pulsing Scan Wig-Wag
6	All Pulsing Tremor Fast	14	Anti-Clockwise Pulsing Scan	22	Split Pulsing Chaser Fast	30	Left-Right Pulsing Scan Wig-Wag Fast
7	Left-Right Pulsing Tremor	15	Clockwise Pulsing Scan Fast	23	Split Pulsing Scan	31	Butterfly Pulsing Scan
8	Left-Right Pulsing Tremor Fast	16	Anti-Clockwise Pulsing Scan Fast	24	Split Pulsing Scan Fast	32	Butterfly Pulsing Scan Fast

MOUNTING OPTIONS & ACCESSORY

06570736

Low Profile Standard Brackets (2PCS)
* For custom strap kit, contact your sales representative.



06300166

Low Profile Narrow Flat Surface Mount Brackets (2PCS)



06300432

Low Profile Wide Flat Surface Mount Brackets (2PCS)



06301880

Low Profile Narrow Flat Surface Mount Brackets (3PCS), for 66" & 72" Lightbar

06301897

Low Profile Wide Flat Surface Mount Brackets (3PCS), for 66" & 72" Lightbar

06440350

2° Angled Gasket (2PCS)



06570439

CAN Conversion Unit



06490539

35mm Rubber Mounting Feet (2PCS)

06570743

35mm Rubber Mounting Feet(3PCS), for 66" & 72" Lightbar



